

DNAM-1 (phospho Ser329) Polyclonal Antibody
Catalog # AP67846**Specification****DNAM-1 (phospho Ser329) Polyclonal Antibody - Product Information**

Application	WB, IHC-P, IF
Primary Accession	Q15762
Reactivity	Human, Mouse, Monkey
Host	Rabbit
Clonality	Polyclonal

DNAM-1 (phospho Ser329) Polyclonal Antibody - Additional Information**Gene ID** 10666**Other Names**

CD226; DNAM1; CD226 antigen; DNAX accessory molecule 1; DNAM-1; CD antigen CD226

Dilution

WB~~Western Blot: 1/500 - 1/2000. Immunohistochemistry: 1/100 - 1/300. Immunofluorescence: 1/200 - 1/1000. ELISA: 1/40000. Not yet tested in other applications.

IHC-P~~N/A

IF~~1:50~200

Format

Liquid in PBS containing 50% glycerol, 0.5% BSA and 0.09% (W/V) sodium azide.

Storage Conditions

-20°C

DNAM-1 (phospho Ser329) Polyclonal Antibody - Protein Information**Name** CD226**Synonyms** DNAM1**Function**

Cell surface receptor that plays an important role in the immune system, particularly in intercellular adhesion, lymphocyte signaling, cytotoxicity and lymphokine secretion mediated by cytotoxic T-cells and NK cells (PubMed:<<http://www.uniprot.org/citations/8673704>>8673704, PubMed:<<http://www.uniprot.org/citations/9712030>>9712030). Functions as a costimulatory receptor upon recognition of target cells, such as virus- infected or tumor cells. Upon binding to its ligands PVR/CD155 or NECTIN2/CD112 on target cells, promotes the cytotoxic activity of NK cells and CTLs, enhancing their ability to kill these cells (PubMed:<<http://www.uniprot.org/citations/26755705>>26755705, PubMed:<<http://www.uniprot.org/citations/31253644>>31253644, PubMed:<<http://www.uniprot.org/citations/30591568>>30591568). Mechanistically, phosphorylation by Src kinases such as LYN of

FYN, enables binding to adapter GRB2, leading to activation of VAV1, PI3K and PLCG1. Promotes also activation of kinases ERK and AKT, as well as calcium fluxes (By similarity).

Cellular Location

Cell membrane; Single-pass type I membrane protein. Note=Localizes to lipid rafts.

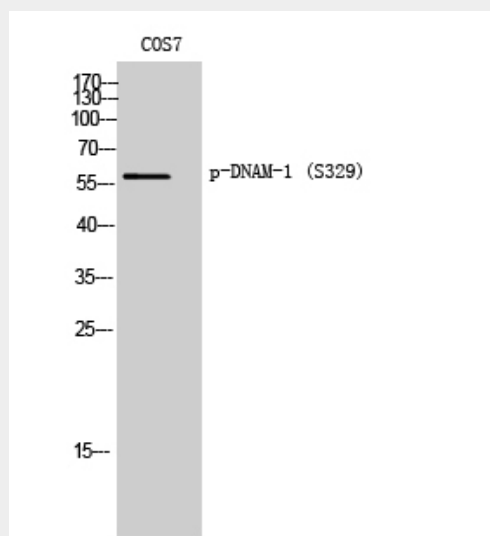
Tissue Location

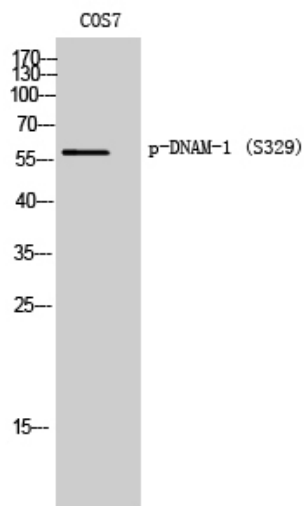
Expressed by peripheral blood T-lymphocytes.

DNAM-1 (phospho Ser329) Polyclonal Antibody - Protocols

Provided below are standard protocols that you may find useful for product applications.

- [Western Blot](#)
- [Blocking Peptides](#)
- [Dot Blot](#)
- [Immunohistochemistry](#)
- [Immunofluorescence](#)
- [Immunoprecipitation](#)
- [Flow Cytometry](#)
- [Cell Culture](#)

DNAM-1 (phospho Ser329) Polyclonal Antibody - Images



DNAM-1 (phospho Ser329) Polyclonal Antibody - Background

Involved in intercellular adhesion, lymphocyte signaling, cytotoxicity and lymphokine secretion mediated by cytotoxic T-lymphocyte (CTL) and NK cell (PubMed:8673704). Cell surface receptor for NECTIN2. Upon ligand binding, stimulates T- cell proliferation and cytokine production, including that of IL2, IL5, IL10, IL13, and IFNG. Competes with PVRIG for NECTIN2-binding (PubMed:26755705).